



Let **UK** Home

2 Bedrooms

Flat

Located in London

£2,200 Per Month



info@letukhome.co.uk

<https://www.letukhome.co.uk/>

01795 358 886



17 Townsend Road London

SE3 9BZ



Let UK Home present this spectacular two bedroom property in Cairncross House in Waterlily Court, part of the Kidbrooke Village development.

This property comprises a large bright open plan kitchen with a dining area, a living room leading to a large private balcony with great views, two double bedrooms (master en-suite with wardrobe), a large family sized bathroom and ample storage.

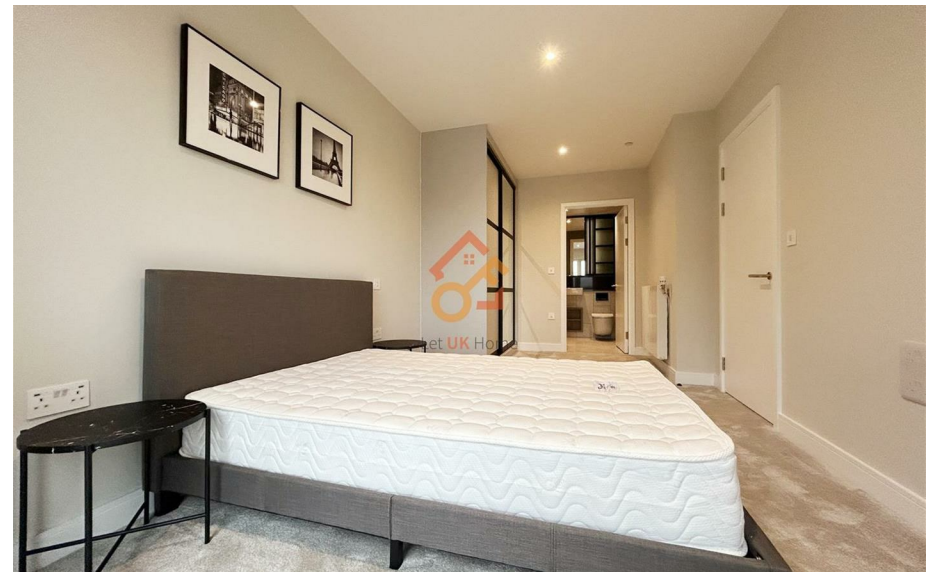
Residents of this exceptional development will have exclusive use of 24-hour concierge and gymnasium. Furthermore, residents will also benefit from an unrivalled selection of shops, bars, restaurants, leisure facilities, green space and beautiful courtyards.

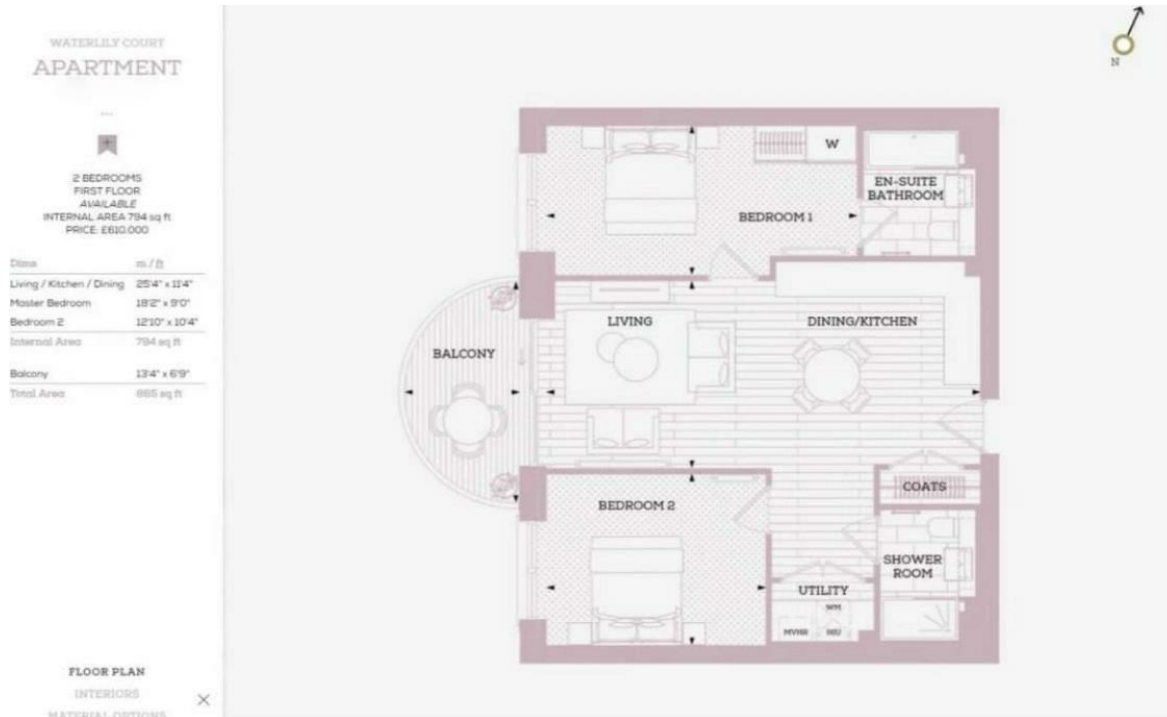
The entire development is built among three major parks: Sutcliffe Park, South Cator Park and North Cator Park, which can fully meet the needs of residents for outdoor activities. Pegler Square, in the heart of Kidbrooke Village, is a vibrant central hub with many amenities including supermarkets, bars, gyms, health centres, estate agency, footpath, cycle path and Kidbrooke railway station, which greatly meet the living needs of residents.

17 Townsend Road London

£2,200 Per Month

- 1st Floor
- Concierge Service
- Green Space
- 24h Security
- The Gym





Let **UK** Home

3F 2 Eastbourne Terrace

Paddington

London

W2 6LG

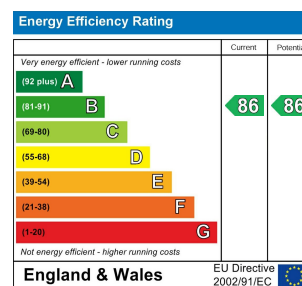
01795 358 886

info@letukhome.co.uk

Council Tax Band: D

Local Authority: Greenwich

Agents Note: Whilst every care has been taken to prepare these particulars, they are for guidance purposes only. All measurements are approximate and are for general guidance purposes only and whilst every care has been taken to ensure their accuracy, they should not be relied upon and potential buyers/tenants are advised to recheck the measurements.



<https://www.letukhome.co.uk/>